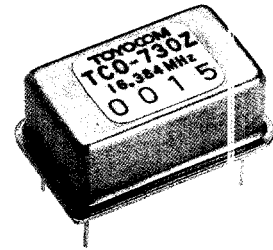
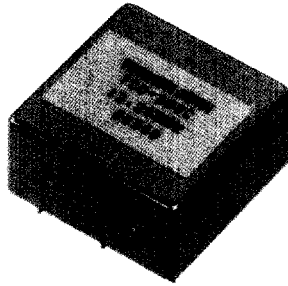


VCXO

TCO-208C, TCO-730Z2

Features

- Wide frequency control range (TCO-208C)
- DIP-14 Hermetically sealed package (TCO-730Z2)
- TTL compatible (Fanout-2)

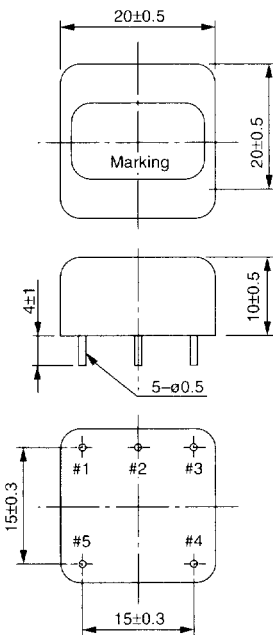


Specifications

Type	TCO-208C	TCO-730Z2
Standard frequency	1.54MHz, 2.048MHz	12.352MHz, 16.384MHz
Supply voltage	+5V ±5%	+5V ±5%
Current drain	25mA Max	20mA Max
Output	TTL compatible (Fanout-2) squarewave	TTL compatible (Fanout-2)
Stability vs Temperature	±30ppm/ 0 to +65 C (referred to +25 C)	±30ppm/ -20 to +70 C (referred to +25 C)
Stability vs Supply voltage	±5ppm/ +5V ±10%	±2ppm/ +5V ±5%
Aging	±3ppm/ year	±3ppm/ year
Frequency control range	±200ppm Min	±100ppm Min
Frequency control voltage	+2.5V ±2.5V	+2.5V ±2V
Available frequency range	1 to 25MHz	12 to 30MHz

Outline Drawing [mm]

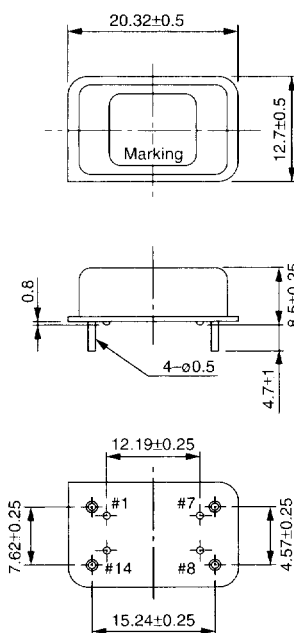
[TCO-208C]



Pin connections

1	Vcc
2	Output
3	GND/case
4	Vcont
5	GND/case

[TCO-730Z2]

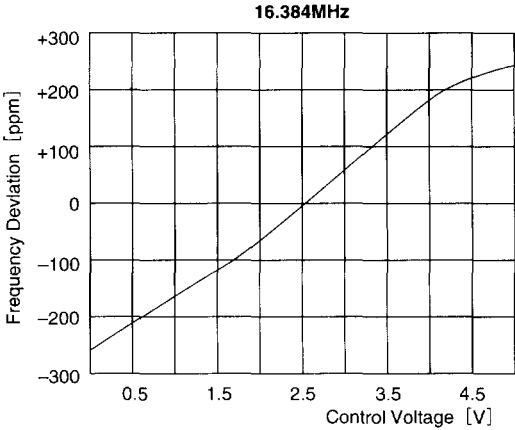


Pin connections

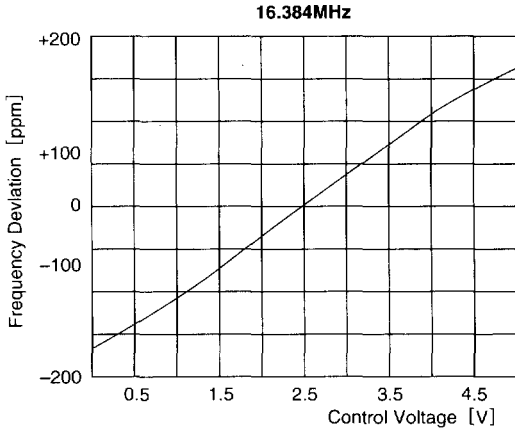
1	Vcont
7	GND/case
8	Output
14	Vcc

Electrical Data

TCO-208C

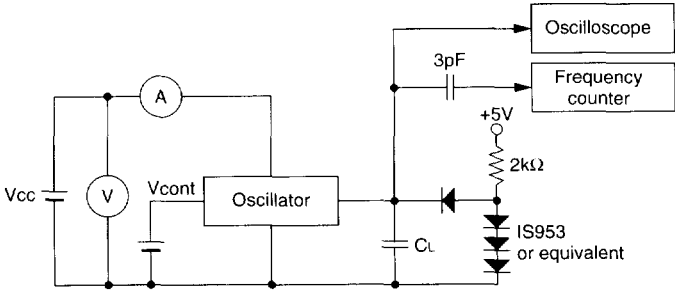


TCO-730Z2



Test Circuit

TCO-208C, 730Z2



CL: Total fixture and probe capacitance = 15pF Max